



ANANTARA

CHIANG MAI
SERVICED SUITES

The colonial style house at Anantara Chiang Mai Resort is the former British Consulate of Chiang Mai, offering guests a restaurant and bar of charming old world elegance.



THE SPIRIT OF ANANTARA

Drawing on the cultural traditions, fascinating heritage and natural beauty of each alluring destination, every luxurious Anantara hideaway is utterly unique and offers signature experiences for a journey rich with discovery.

In the charming northern Thai city of Chiang Mai, we are proud to introduce a brand new address for elegant living that is distinctly Anantara. Complementing the existing Anantara Chiang Mai Resort located directly opposite, Anantara Chiang Mai Serviced Suites offers a boutique collection of only 44 one, two and three bedroom serviced suites.

Combining a contemporary urban lifestyle with understated Chiang Mai elegance in the heart of the city, residents benefit from a coveted address, access to the resort opposite and the option of living in or leasing their prestigious serviced suite.

Welcome to Anantara Chiang Mai Serviced Suites.





ANANTARA CHIANG MAI SERVICED SUITES

Offering a welcoming sense of space and light upon arrival, the spacious lobby is designed to create a clear and calming separation between the streetscape and the home.

Fusing a clean, modern sensibility with traditional Thai design values, this is a residence in which every detail has been lovingly considered and thoughtfully crafted.

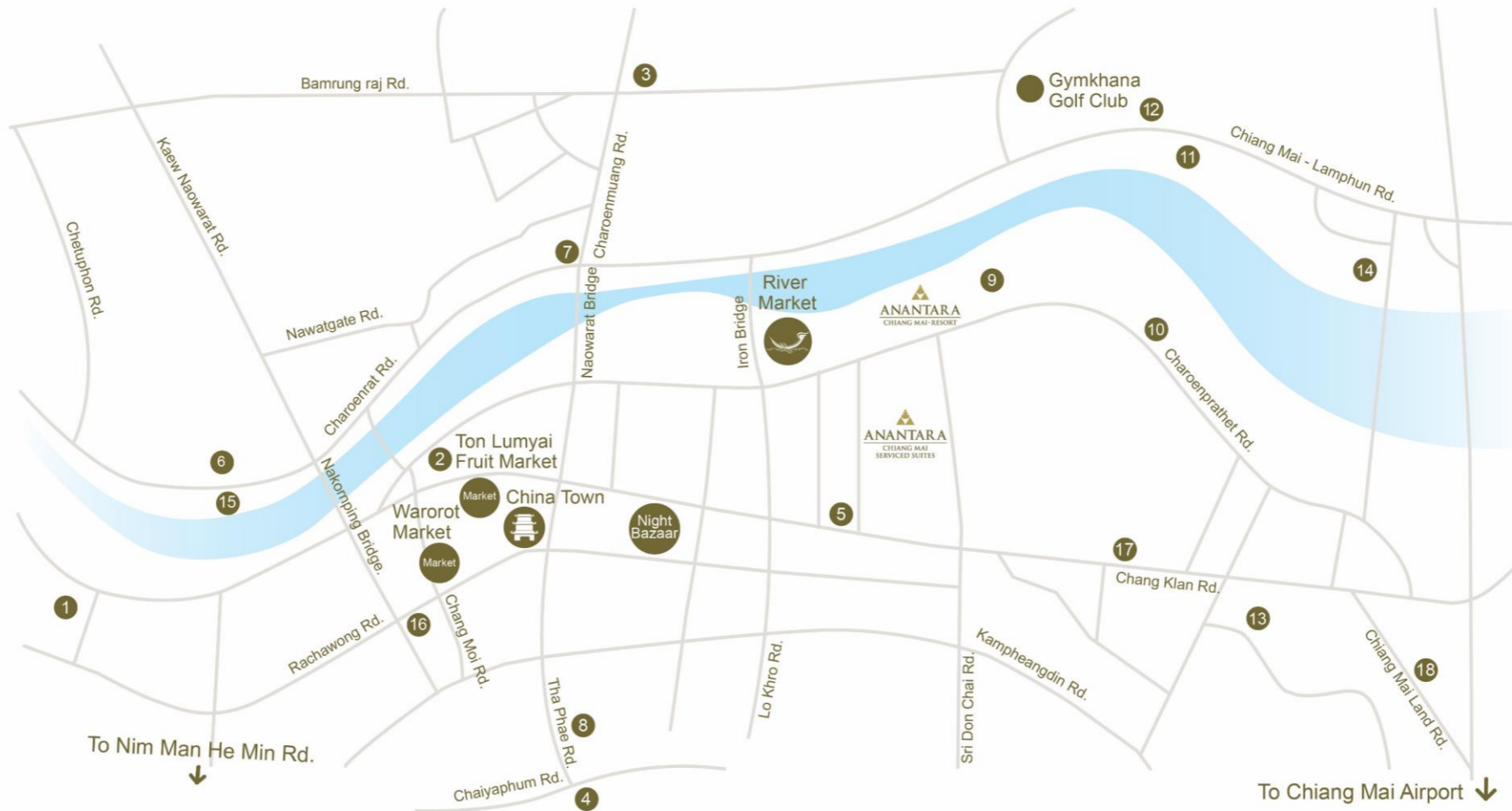


WELCOME TO THE NEIGHBOURHOOD

With a central city location in one of Chiang Mai's most sought after neighbourhoods, Anantara Chiang Mai Serviced Suites is only a stroll away from bustling market life, riverside attractions and the traditional moated old city. While the eclectic and trendy areas of Chiang Mai are just a short drive from this prestigious residence.

Local highlights

- Night Bazaar – 5 minute walk
- Riverside boutiques, bars and restaurants – 5 – 10 minute walk
- Old city (temples, markets, shops and eateries) – 15 minute walk
- Saturday and Sunday walking street markets – 15 minute walk
- Nim Man He Min (quirky and trendy art galleries, boutiques, coffee shops, restaurants and bars) – 20 minute walk
- Warorot China Town & Flower Market (market stalls, fabric shops, Thai designers and bohemian shops) – 10 minute drive



AMENITIES

Shopping

- | | |
|----------------------|--|
| 1. Muang Mai Market | 4. Tha Phae Walking Street (Sunday Market) |
| 2. Flower Market | 5. Anusarn Market |
| 3. Sanpa Khoi Market | |

Culture

- | | |
|---------------------|----------------------------|
| 6. Wat Sri Khong | 10. Church |
| 7. Church | 11. Den Damrongtham Church |
| 8. Wat Mahawan | 12. Kawila Monument |
| 9. Wat Chai Mongkol | |

Hospital

- | | |
|-------------------------------|-----------------------|
| 13. Central Memorial Hospital | 14. Rasjavaj Hospital |
|-------------------------------|-----------------------|

Tourist Attraction

- | | |
|---------------------------------------|---------------------|
| 15. Scorpion Tailed Boat River Cruise | 17. Art in Paradise |
| 16. Neramit | 18. Elephant Parade |







INTRODUCING OUR SUITES

All serviced suites feature a rich palette of natural materials and beautifully refined finishes to create a sophisticated neutral canvas and an effortless living experience.

Living room | 1 Bedroom Suite

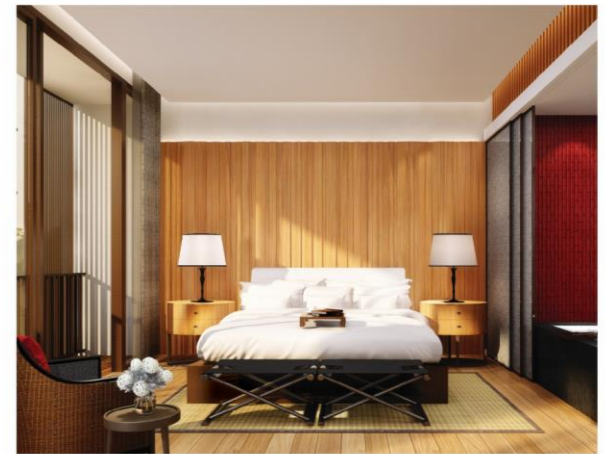
A living room doubles as a generous study space, with integrated shelving and floor to ceiling windows.

Bathroom

The luxurious en-suite bathroom features contrasting textures of natural stone, given an ambient mood with bespoke lighting.

Bedroom | 1 Bedroom Suite

Simple, elegant detailing emphasises the inherent beauty of natural finishes, with warm tones accented by light, bright touches.





**Living room
2 Bedroom Suites**

Inside each state of the art suite, every detail has been carefully considered and beautifully crafted.



**Living room
3 Bedroom Suites**

Abundant natural light accentuates details of the bespoke kitchen and exceptional finishing touches.

**Master Bedroom
2 Bedroom Suites**

Sophisticated lighting controls allow residents to create the ideal ambience for a relaxing private retreat.



**Bathroom
3 Bedroom Suites**

A luxury bathroom is opulently designed with the finest finishes and fittings.

A wide-angle photograph of a rooftop pool area at night. The pool is illuminated with a soft green light. To the left, there is a wooden structure with a bar and several lounge chairs. The background shows a city skyline with various buildings under a dark blue sky. The overall atmosphere is serene and modern.

THE ANANTARA EXPERIENCE



SERVICES AND AMENITIES

Anantara Chiang Mai Serviced Suites is designed for complete relaxation and indulgence, with impressive leisure facilities including a beautiful roof top swimming pool.

Thoughtful extra touches make life even more comfortable and enjoyable, with attentive room service, housekeeping, babysitting and a concierge ensuring that each day feels exclusive, smooth and extremely convenient.

Residents also benefit from access to all of the wonderful services at Anantara Chiang Mai Resort located directly opposite. This elegant retreat edging the Mae Ping River offers a range of signature experiences, from the state-of-the-art fully equipped gym and the award winning pampering of Anantara Spa, to sumptuous international and Asian dining experiences and the resort's charming afternoon tea and high tea rituals.





RENTAL MANAGEMENT

The Anantara Rental Management Scheme is a turnkey rental service that offers a return on investment by leasing the Serviced Suites. The scheme has been designed for owners who want their property professionally managed and marketed by Anantara, whilst still having the option of staying in the property and enjoying the hotel facilities for their own vacations.

The Rental Management Scheme provides owners with complete peace mind, knowing that their asset is in professional hands. The resort management team will offer round-the-clock support services and take care of the entire letting process, providing a seamless and convenient rental management solution.

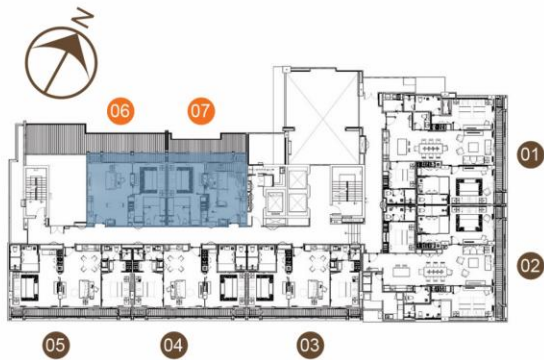
While to maximise rental return, owners benefit from Anantara's international marketing activities and global sales network, as well as the leveraging opportunities of Anantara Hotels, Resorts & Spas' world renowned brand reputation.



Developer : MHG NPark Development Company Limited | Registered Capital : THB 100,000,000 | Registered Address : 16th Floor, Berli Jucker House, 99 Soi Rubia, Sukhumvit 42 Rd., Ba ngkok 10110 | Project Location : Charoen Prathet Road, Changkian Sub-district, Muang District, Chiang Mai 50100 Thailand | Plot No. : 4089, 4093, 4092 | Title Deed No. : 2230, 2234, 2235 | Project Land Area : Approx. 1 Rai 26.5 Sq.Wah (1,760 Sqm (EIA Approved)) | Construction Permit No. : สบ. 52004/1604

All images, plans and maps are for guidance purposes only. All measurements have been taken from the most recent architectural plans, and whilst every effort has been made to ensure their accuracy these cannot be guaranteed. While all details in this package, our website and in the video are believed to be correct we reserve the right to make changes or modifications at any time.

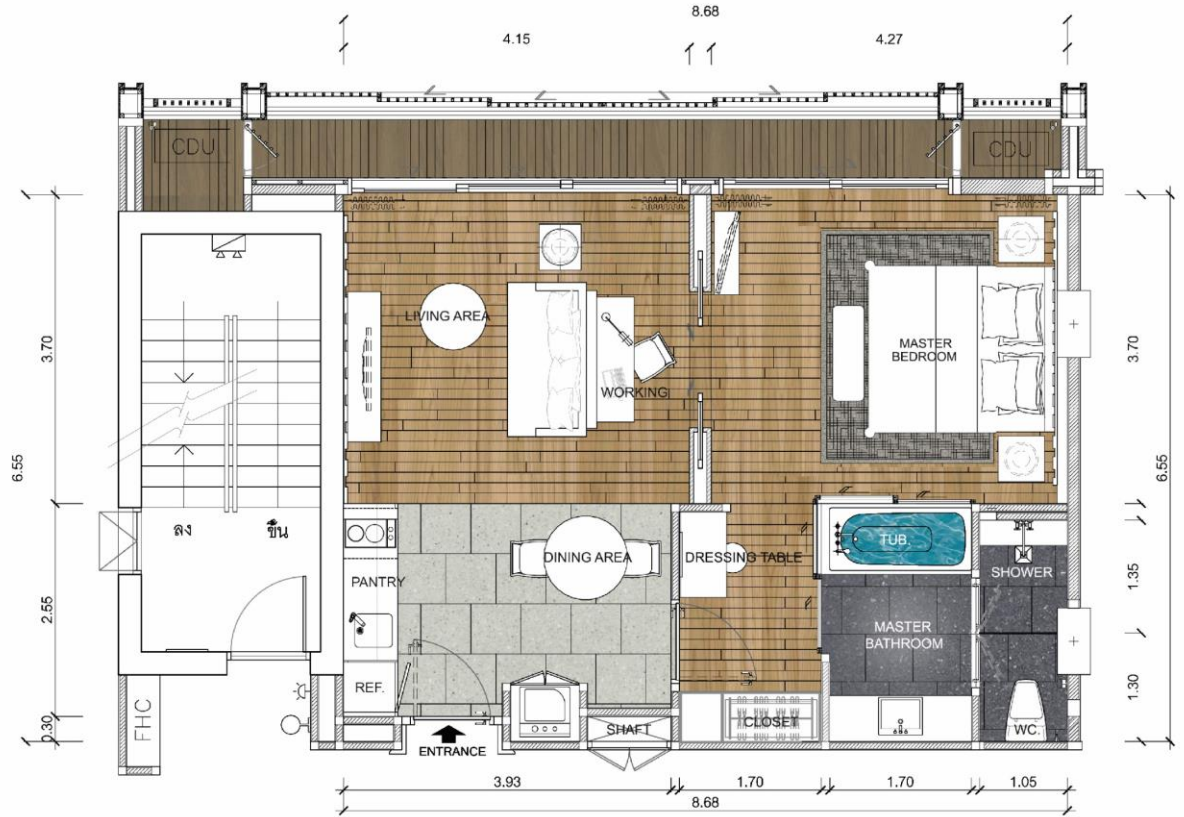
1 Bedroom Suite



Unit Type	06 07
Description	One Bedroom Suite
Floor	2
Area	60 sq.m.

Actual usable floor space may vary from the value stated. The developer reserves the right to make revisions. All measurements, drawings and materials are approximate. The information is subject to change without notice. This plan is as of February 2016.

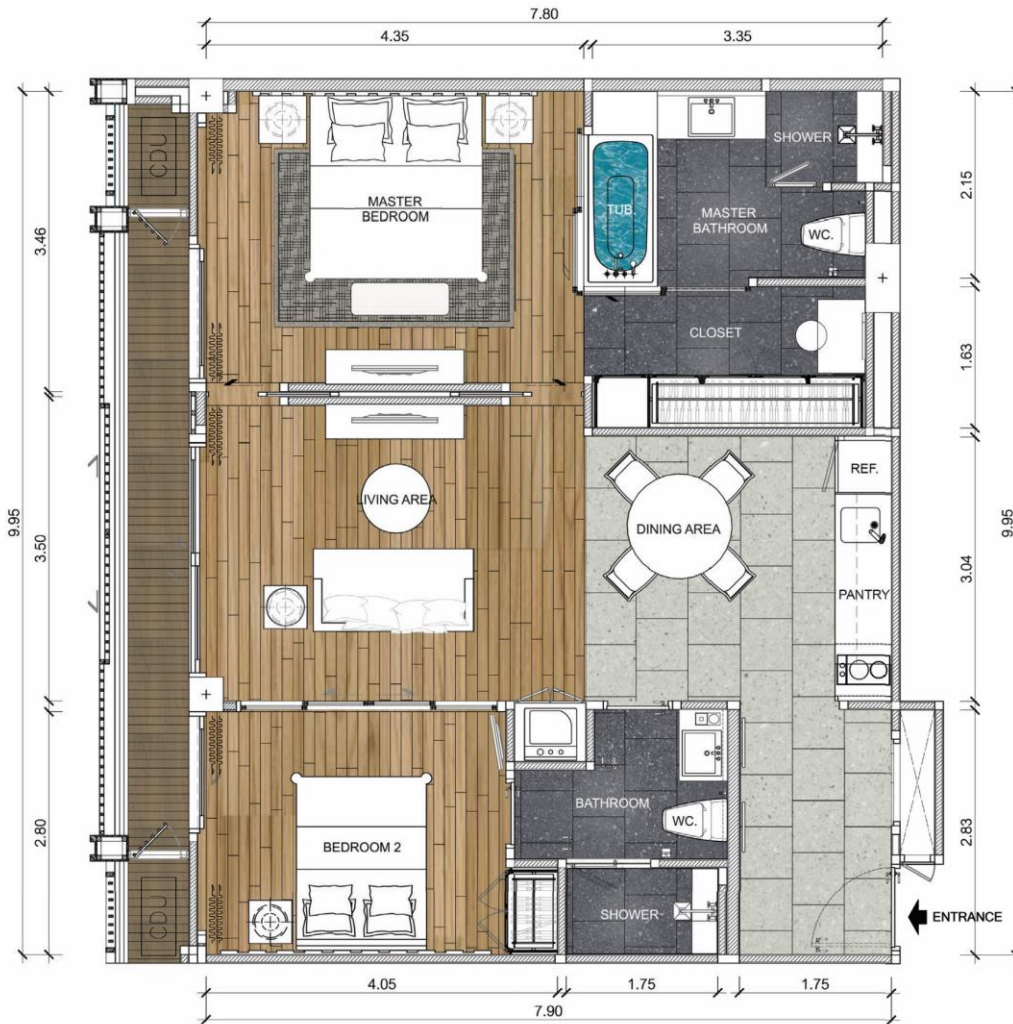
1 Bedroom Suite



Unit Type	06
Description	One Bedroom Suite
Floor	3-7
Area	66.74 sq.m.

Actual usable floor space may vary from the value stated. The developer reserves the right to make revisions. All measurements, drawings and materials are approximate. The information is subject to change without notice. This plan is as of February 2016.

2 Bedroom Suite

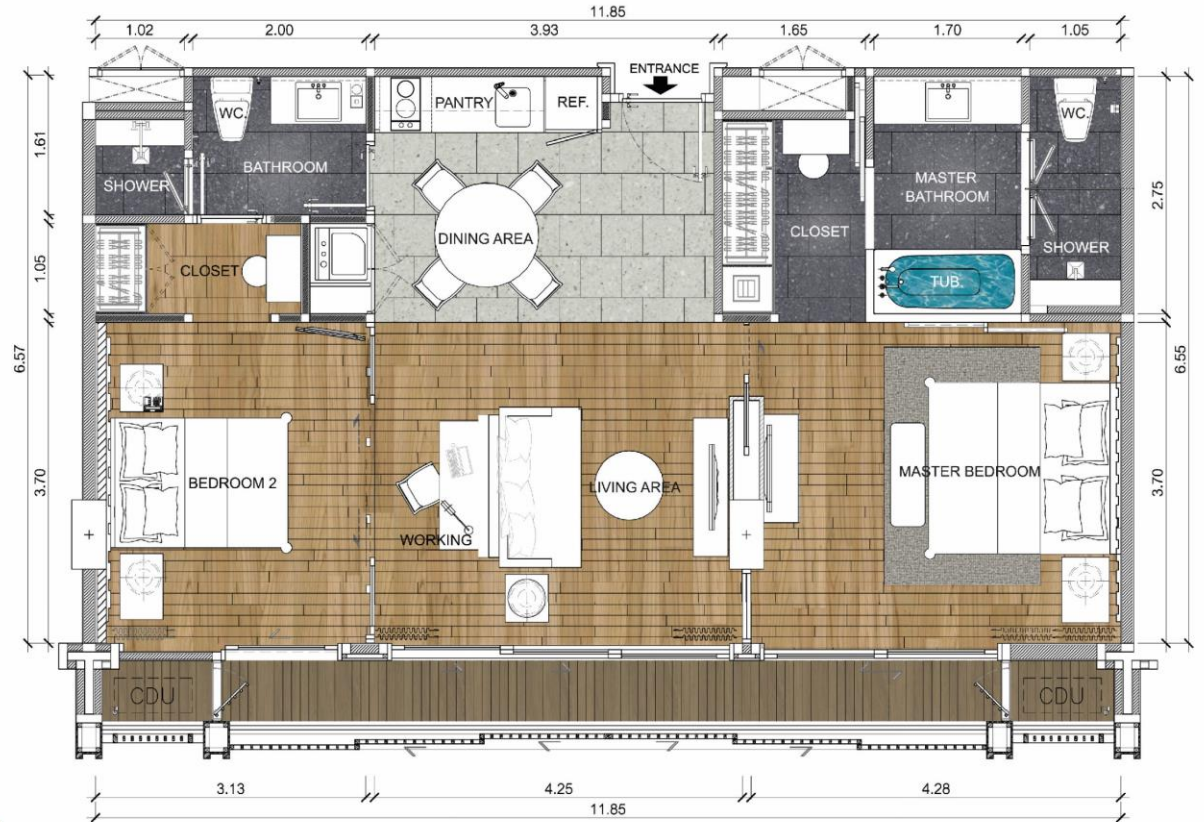


Unit Type	08
Description	Two Bedroom Suite
Floor	3 - 6
Area	87.31 sq.m.



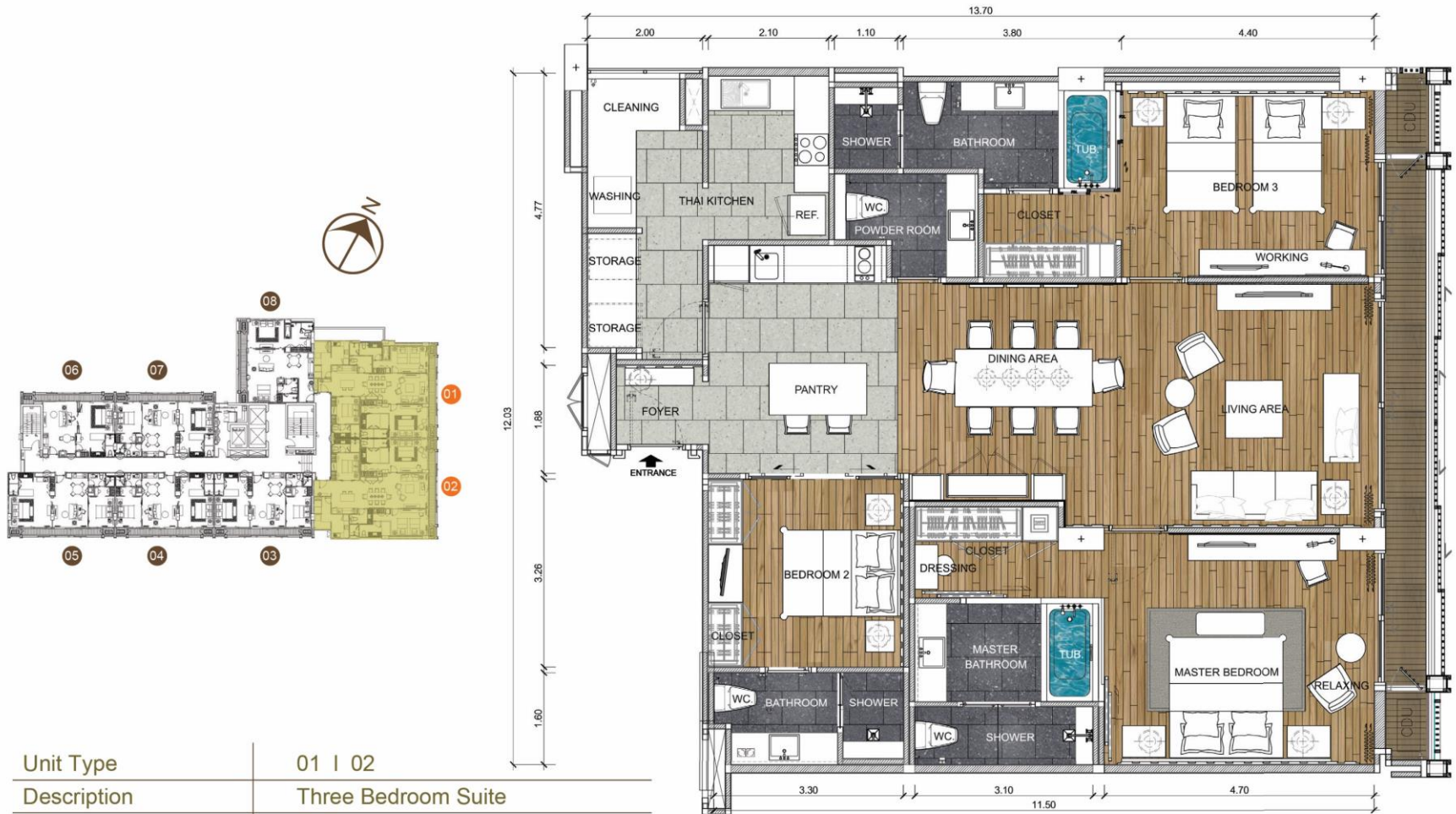
Actual usable floor space may vary from the value stated. The developer reserves the right to make revisions. All measurements, drawings and materials are approximate. The information is subject to change without notice. This plan is as of February 2016.

2 Bedroom Suite



Unit Type	03 04 05	07
Description	Two Bedroom Suite	Two Bedroom Suite
Floor	2 - 7	3 - 7
Area	87.72 - 93.55 sq.m.	87.08 sq.m.

Actual usable floor space may vary from the value stated. The developer reserves the right to make revisions. All measurements, drawings and materials are approximate. The information is subject to change without notice. This plan is as of February 2016.



Unit Type	01 02
Description	Three Bedroom Suite
Floor	3 - 6
Area	149.50 - 161.39 sq.m.

Actual usable floor space may vary from the value stated. The developer reserves the right to make revisions. All measurements, drawings and materials are approximate. The information is subject to change without notice. This plan is as of February 2016.

Anantara Chiang Mai Serviced Suites

Sales Office: 123 Charoen Prathet Road

T. Changklan, A.Muang, Chiang Mai 50100 Thailand

Tel: (66) 85 484 8752

Email: propertysales@minor.com

anantararesidences.com/chiangmai